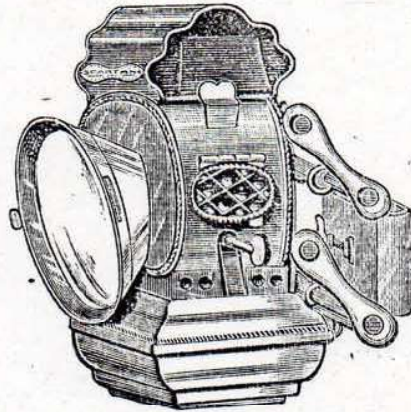
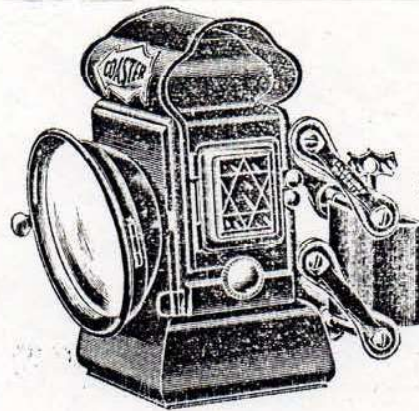


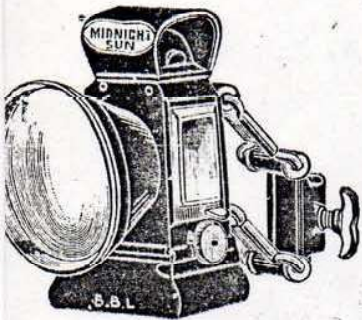
No. 728.
THE "HALYCON" LAMP.
Best Quality.



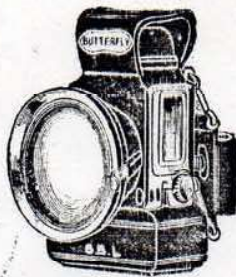
No. 0733.
THE "NEW SPARTAN" LAMP.



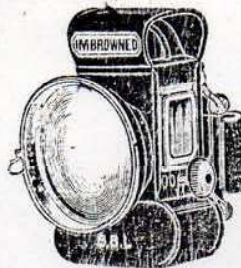
No. 736. THE "COASTER" LAMP.
Invites comparison.



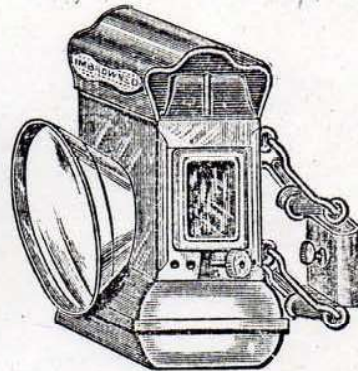
No. 734.
THE "MIDNIGHT SUN."
Excellent Value.
High, 5 in. Weight, 13 ozs.
Double Lens, 2½ in.



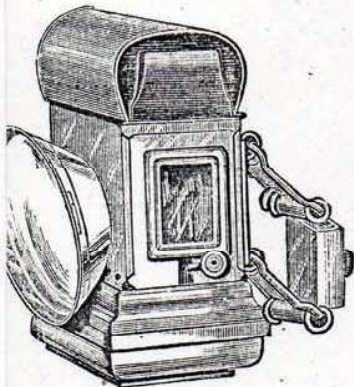
No. 727.
THE "BUTTERFLY" LAMP.
High, 4½ in. Weight, 10 ozs.
Lens, 2½ in.
A. Enamelled.
B. Nickel Plated.



No. 729.
THE "IMBROWNED"
LAMP.
High, 4¼ in.
Weight, 9 ozs.
Lens, 2½ in.



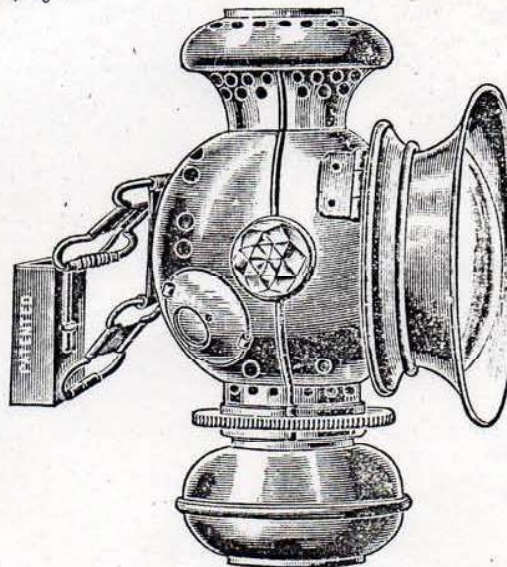
No. 0738. THE "SILVER
IMBROWNED" LAMP.



No. 0739.
THE "SILVER RIPLEY" LAMP.



No. 0743.
THE "SILVER NORTH ROAD"
LAMP.



No. 0731. THE "GREAT EASTERN" LAMP.
Nickel Plated. Burns Petroleum.